



GMT MONTHLY MEMBERSHIP PROGRESS REPORT

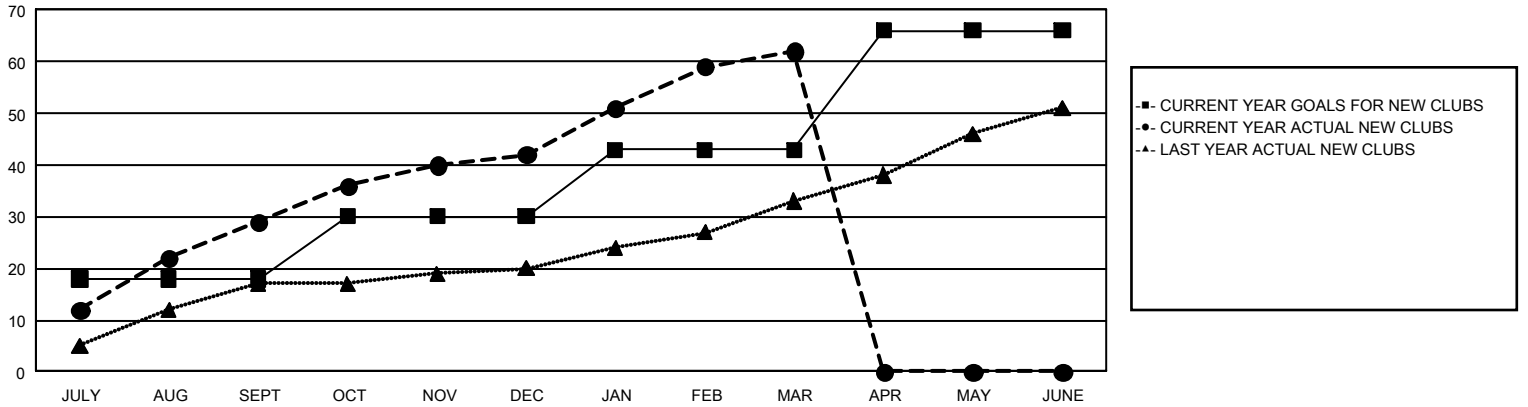
GAT Constitutional Area 7

Results as of: 3/31/2024

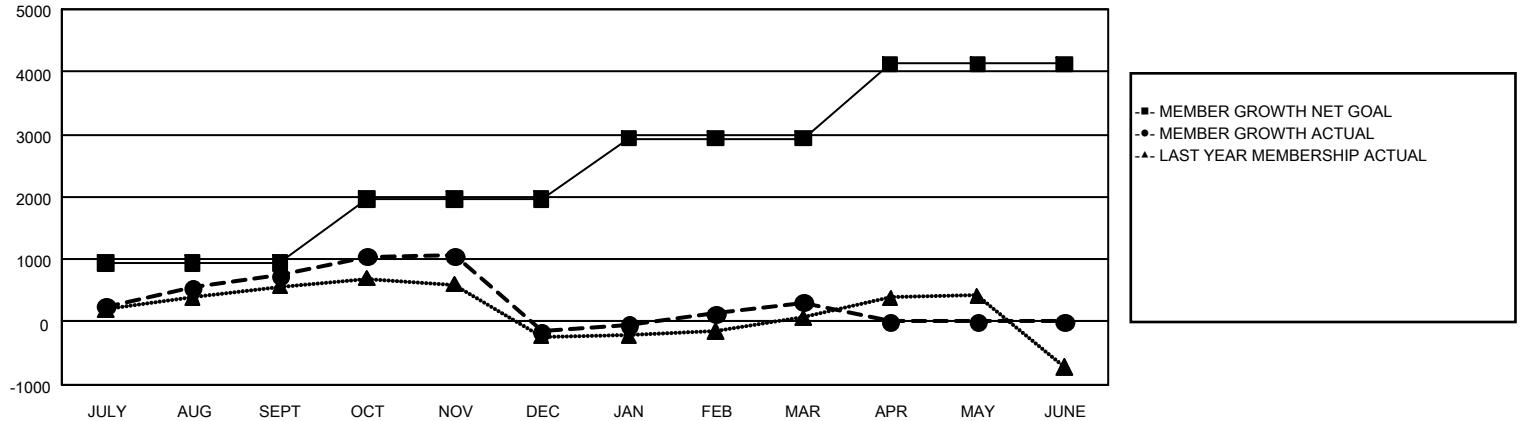
REPORT DOES NOT INCLUDE CLUBS IN UNDISTRICTED AREAS.

Clubs				Members			
RESULTS FOR 2023-2024				RESULTS FOR 2023-2024			
QUARTER	NEW CLUB GOAL	NEW CLUBS	DROPPED CLUBS	QUARTER	MEMBER GROWTH NET GOAL	MEMBER GROWTH ACTUAL	DROPPED MEMBERS ACTUAL (including transfers)
JULY/AUG/SEPT	18	29	21	JULY/AUG/SEPT	937	2,190	1,265
OCT/NOV/DEC	12	13	6	OCT/NOV/DEC	1,029	1,487	2,275
JAN/FEB/MAR	13	20	3	JAN/FEB/MAR	968	1,720	1,105
APR/MAY/JUNE	23	0	0	APR/MAY/JUNE	1,194	0	0

GOALS AND ACTUAL NEW CLUBS CUMULATIVE



GOALS AND ACTUAL MEMBERS CUMULATIVE



DROPPED CLUBS: 30	1,111 CLUBS OF 1,904 ADDED 1 OR MORE NEW MEMBERS	<u>GENDER DISTRIBUTION</u>	
<u>DROPPED MEMBERS</u>		MALE	24,178 (56.71%)
DECEASED	359	FEMALE	18,431 (43.23%)
CLUB CANCELLED	68	TOTAL FAMILY UNIT MEMBERS 7,231	
OTHER	4,216		
TOTAL	4,643		
CLICK HERE FOR CUMULATIVE MEMBERSHIP DATA		TOTAL FAMILY UNIT MEMBERS 7,231	
		FAMILY MEMBERS PAYING HALF DUES 3,878	